

SILVER STANDARD

IN BRIEF

NASDAQ GLOBAL MARKET: SSRI | TSX: SSO

SILVER STANDARD RESOURCES INC.

Suite 1400.999 West Hastings Street
Vancouver BC, Canada V6C 2W2

T 604 689 3846
F 604 689 3847

TOLL FREE 888 338 0046
www.silverstandard.com

SNAPSHOT - JANUARY 2010

Common Shares issued:	72.0 million
Fully diluted:	77.2 million
Stock Exchange Listings:	NASDAQ Global: SSRI; TSX: SSO
Average Daily Volume (2009):	1.38 million
52-week High/Low:	US\$25.60/US\$11.65
Convertible notes:	US\$138 million at 4.5%/year
Cash and Cash Equivalents:	US\$42.9 million at Sept. 30, 2009 (followed by ABCP sale)
Marketable securities (at market):	US\$11.0 million at Sept. 30, 2009
Other investments:	US\$24.9 million at Sept. 30, 2009
Reserves and Resources (millions of oz.):	Proven and Probable: Silver: 286.8 Measured and Indicated: Silver: 1,128.2 Gold: 26.340 Inferred: Silver: 532.1 Gold: 16.266

CORPORATE PROFILE

Silver Standard Resources Inc. is now a silver producer. The Pirquitas Mine in Argentina achieved commercial production in Q4/09 and will be a significant producer of silver and tin. The company also controls the largest silver resource of any publicly-traded silver company and growing exposure to gold resources. *For specific project details, please refer to the company's 2008 Annual Review, 2009 quarterly reports and recent news releases.*

Strong technical management focused on creating and maximizing shareholder value through exploration and project development, low share capitalization and no hedging program enhance the company's fundamentals.

Silver Standard was incorporated on December 11, 1946 and its shares graduated from the NASDAQ SmallCap (August 1996) to the NASDAQ Global Market on October 12, 2004. The company's shares commenced trading on the Toronto Stock Exchange on November 4, 2004 and joined the S&P/TSX 300 Index on June 23, 2006. Silver Standard is a member of 32 stock indices including the XAU (0.9%) and the S&P/TSX Precious Metals Index (23.7%). Options are also traded on several US and Canadian exchanges.

2010 PROJECT PLANS

PROJECT	INTEREST	ACTIVITIES
Mina Pirquitas, Jujuy, Argentina	100%	Production ramping up, full production expected in Q1/10
San Luis, Ancash, Peru	up to 80%	Feasibility study in Q1/10; high-grade gold-silver vein project
Pitarrilla, Durango, Mexico	100%	Feasibility for u/g silver, lead and zinc mine planned for Q4/10
Snowfield and Brucejack, B.C., Canada	100%	Major drilling program in the summer of 2010

Mina Pirquitas, Jujuy Province, Argentina - Silver Standard holds a 100% interest in this property and a significant silver open pit mining operation is ramping up, with commercial production achieved on December 1, 2009. The plant is currently processing oxide and transitional ore and will begin processing sulphide ore in Q1/10. The processing plant has a 6,000 tonne/day capacity.

Pirquitas is forecast to produce one million ounces of silver in 2009, 7 million ounces of silver and 2 million pounds of tin in 2010 and 8 - 10 million ounces in 2011. Average operating costs for 2010 are expected to be approximately US\$9.00 per ounce of silver net of tin credits. Costs per ounce of silver are expected to decline as silver production increases.

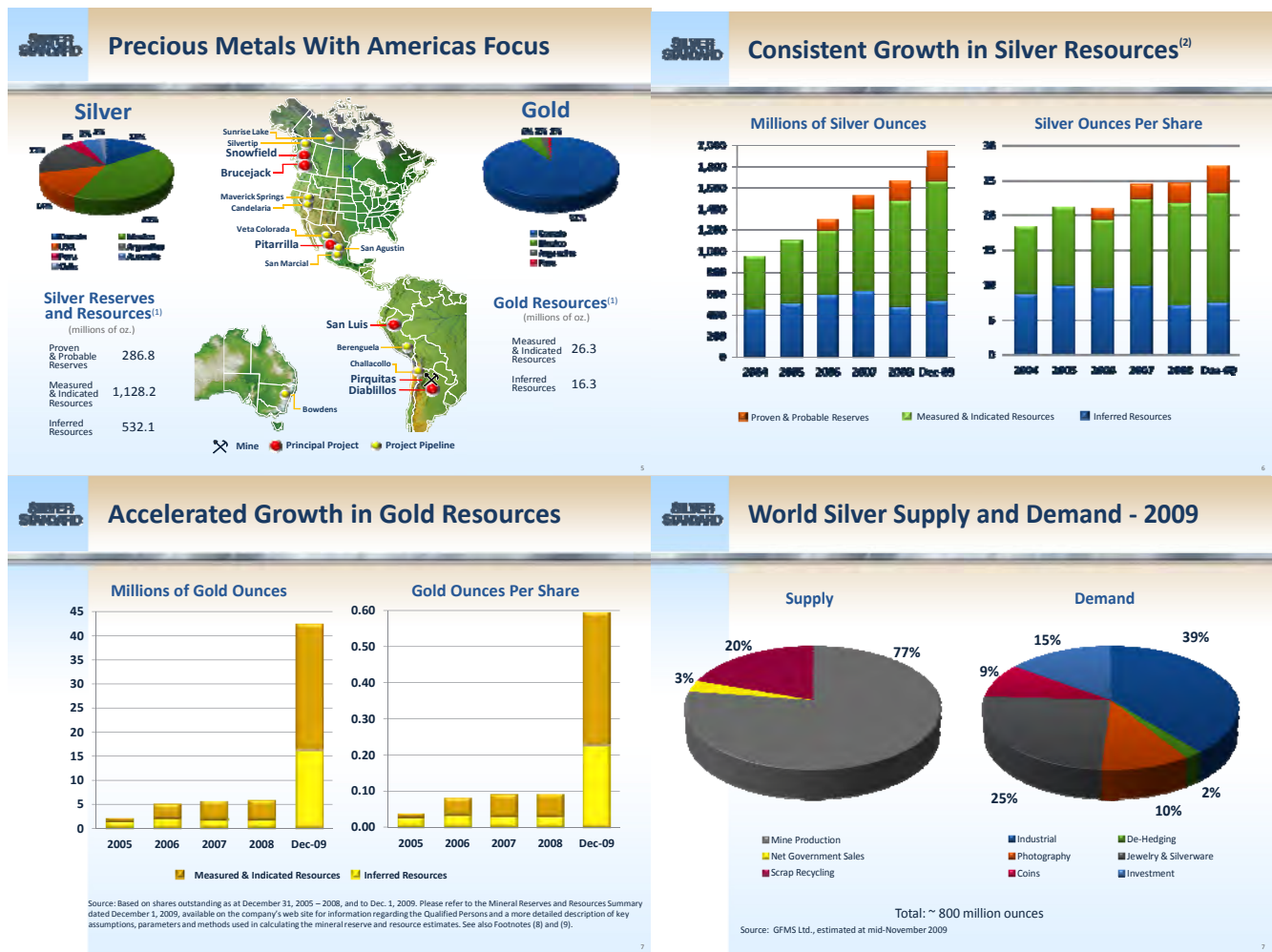
San Luis, Ancash, Peru - Silver Standard holds a 55% interest (Esperanza Silver Corporation, 45%) in this new high-grade epithermal gold-silver district located 19 kilometers northwest of Barrick Gold's Pierina gold mine. An updated gold-silver resource estimate was reported in December 2008. Silver Standard has elected to increase its interest to 70% by completing a feasibility study of an underground mining operation focused on the Ayelén Vein. The study's completion is expected in Q1/10. Silver Standard can increase its interest to 80% by placing the property in production.

Pitarrilla, Durango, Mexico - This 100%-owned, 526 square-mile property covers a grass roots discovery made by Silver Standard in 2002. Following the completion of almost 180,000 meters of drilling, Pitarrilla now ranks as one of the largest silver discoveries in the world in the last decade.

Silver Standard reported a pre-feasibility study of the Breccia Ridge underground (estimated probable reserves of 91.7 million ounces of silver based on US\$11/oz silver, US\$0.70/lb zinc and US\$0.50/lb lead), as the first phase of a staged development at Pitarrilla, in August '09. A full feasibility study is expected in 2010. Concurrent with the advancement of the Breccia Ridge underground and refinement of the mine plan, a scoping study is underway to be followed, if warranted, by a pre-feasibility study on the Breccia Ridge open-pit opportunity. In addition to reserves, measured and indicated silver resources at Pitarrilla currently total 552 million ounces, plus 82 million inferred ounces.

Snowfield and Brucejack, British Columbia, Canada - These gold-copper projects are located near Stewart, B.C. adjacent to Seabridge Gold's KSM project and close to Barrick's Eskay Creek gold mine. In December 2009, Silver Standard reported a 23.8 million ounce gold resource estimate (measured and indicated) along with 14.91 million ounces of gold resources inferred based on a cut-off grade of 0.35 grams of gold-equivalent per tonne for the Snowfield and Brucejack zones combined. A major program is planned for next summer, focusing on the Brucejack area of the property.

Diablillos, Salta Province, Argentina - This 36 km² silver-gold project (100%) is located in northwestern Argentina. The Oculo deposit hosts indicated resources of 77.1 million oz. of silver and 640,000 oz. of gold. A pre-feasibility study is expected in 2010.



Notes: For a breakdown of Reserves and Resources by category and for a more detailed description of the key assumptions, parameters and methods used in calculating Silver Standard's Reserves and Resources, see Silver Standard's Annual information Form/ Form 20-F on file with Canadian provincial securities regulatory authorities and the U.S. Securities and Exchange Commission and the Mineral Reserves and Resources Summary dated January 14, 2010, available on the company's web site where additional information on Qualified Persons is tabled. Total ounces per share represent the sum of proven and probable reserves, plus measured and indicated mineral resources plus inferred mineral resources divided by the number of shares outstanding at December 31, 2009. Proven and probable mineral reserves, measured and indicated mineral resources and inferred mineral resources are separate categories under NI 43-101.

Investor Relations in Canada: 604.689.3846, Paul LaFontaine, Director, Investor Relations
 Inquiries: invest@silverstandard.com
silverstandard.com © 2010